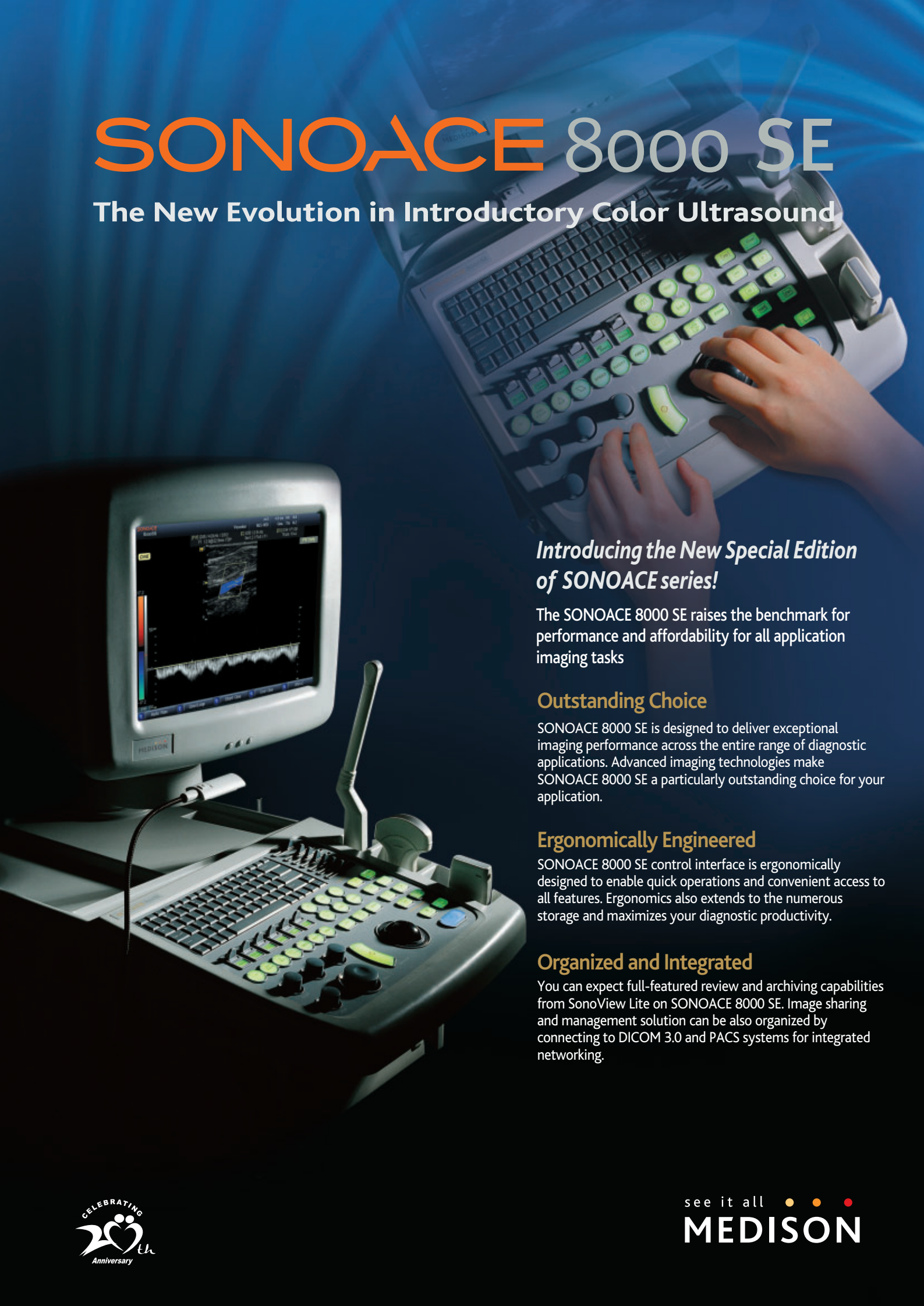


# SONOACE 8000 SE

The New Evolution in Introductory Color Ultrasound



## *Introducing the New Special Edition of SONOACE series!*

The SONOACE 8000 SE raises the benchmark for performance and affordability for all application imaging tasks

### **Outstanding Choice**

SONOACE 8000 SE is designed to deliver exceptional imaging performance across the entire range of diagnostic applications. Advanced imaging technologies make SONOACE 8000 SE a particularly outstanding choice for your application.

### **Ergonomically Engineered**

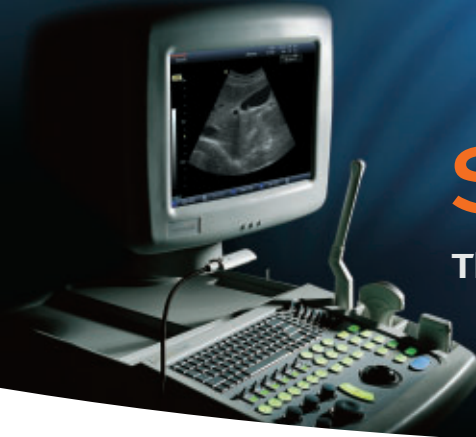
SONOACE 8000 SE control interface is ergonomically designed to enable quick operations and convenient access to all features. Ergonomics also extends to the numerous storage and maximizes your diagnostic productivity.

### **Organized and Integrated**

You can expect full-featured review and archiving capabilities from SonoView Lite on SONOACE 8000 SE. Image sharing and management solution can be also organized by connecting to DICOM 3.0 and PACS systems for integrated networking.



see it all ● ● ●  
**MEDISON**



# SONOACE 8000 SE

The New Evolution in Introductory Color Ultrasound



AC Section in 2D



Fetal Ear in 2D



Kidney in Power Doppler



Thyroid in Power Doppler



Common Carotid Artery in Doppler



Common Carotid Artery in 2D

LF-U-SONOACE 8000SE-CRE-09-06-2005